



2021 - METALLIC FINISHES

METALLIC FINISH INFORMATION

HAND-CRAFTED FINISHES

All metallic Meljac plates are made of high-quality brass at their base. These plates are offered in over 30 different finishes, which are done by hand to provide a range of unique colors and effects to suit your project.

Most Meljac finishes have a lacquer applied to preserve the integrity of the finish. However, given the dynamic nature of metal and hand-finishing process finishes can change over time and there can be slight variations amongst finishes that add to the distinct character and appeal of the product.

Meljac offers several unlacquered finishes. Unlacquered Polished Brass will be highly reactive and quickly change with time and handling. Other selections such as Aged Brass, Antique Brass and Burnished Brass are unlacquered with a wax varnish intended to reduce the reactivity while still allowing for continued patination over time. Due to their patinated and reactive nature, we are not able to make any guarantees about the outcomes or evolution of unlacquered finishes.

You are welcome to contact Meljac North America with any questions regarding finish options, care and longevity.

POWDER COAT FINISHES

In addition to our metallic finish catalog we also offer powder coated plates in any RAL color, including various shades of white. Please see the RAL color chart for select options.

CUSTOM FINISHES

With our in-house finish expertise and capabilities, Meljac can also provide custom finishes specially crafted for your project. Please contact Meljac North America for details including pricing, order minimums and lead-times.

TOGGLE AND PUSH BUTTON FINISHES

Polished chrome is the default toggle or push button finish for plates in a cool finish (chrome, nickel, gunmetal, copper).

Golden brass is the default toggle or push button finish for plates in a warm finish (brass, bronze).

Black chrome is also available as a premium option for toggles and push buttons.

Select finishes also offer the option to have the toggle or push buttons matched to the finish of the plate. Due to the additional labor required for toggle and push button finish matching, this option incurs additional cost and requires a lead-time of 12 weeks.

PAINTING PLATES

For projects that wish to paint their plates on-site, Meljac offers the option to have the plates delivered in a burnished raw brass to allow for priming and painting. Please keep in mind that specific primer and paint is required to successfully paint on a metallic surface.

FINISH AVAILABILITY AND TIERS

Since all Meljac products are made-to-order they are available in any finish in the Meljac catalog.

Each finish falls into one of the three pricing tiers. These are listed below and denoted with a T1, T2 and T3 on the finish image pages.

Tier 1 (T1) Base Cost

Gray Gunmetal / Canon de Fusil Anthracite *
Sanded Gray Gunmetal / Canon de Fusil Sablé
Matte Chrome / Chromé Mat
Polished Chrome / Chromé Vif
Brushed Nickel / Nickel Brossé
Polished Nickel / Nickel Brillant
Sandblasted Nickel / Microbillé Nickel

Tier 2 (T2) Base Cost + 5%

Light Bronze / Bronze Médaille Clair *
Light Bronze Matte / Bronze Médaille Clair Vernis Mat *
Medium Bronze / Bronze Médaille Allemand *
Dark Bronze / Bronze Médaille Foncé *
Brushed Brass / Champagne *
Polished Brass / Laiton Poli Verni
Antique Gold / Doré Patiné *

Tier 3 (T3) Base Cost + 10%

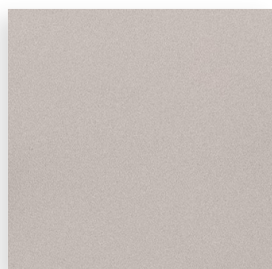
Antique Silver / Argent Patiné *
Polished Dark Bronze / Bronze Médaille Foncé Barège Brillant *
Antique Copper / Cuivre Patiné *
Aged Copper / Cuivre Vieilli Bouchonné *
Satin Copper / Cuivre Satiné *
Ebony / Ebène
Sandblasted Gunmetal / Microbillé Canon de Fusil Anthracite
Sandblasted Chrome / Microbillé Chromé
Dark Polished Nickel / Nickel Noir Brillant
Black Matte Nickel / Nickel Noir Mat
Powdercoats

METALLIC FINISHES

■ Unlacquered

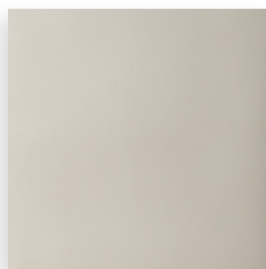
● Mechanism finish can be matched to plate finish

NICKEL & STONE



Sandblasted Nickel

Microbillé Nickel (T1)



Polished Nickel

Nickel Brillant (T1)



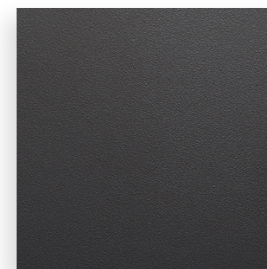
Brushed Nickel

Nickel Brossé (T1)



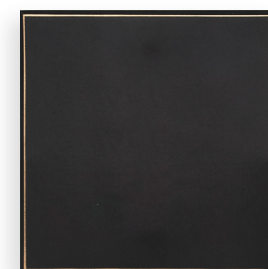
Polished Black Nickel ●

Nickel Noir Brillant (T3)



Matte Black Nickel

Nickel Noir Mat (T3)



Black Stone

(T3)

CHROME & PEWTER



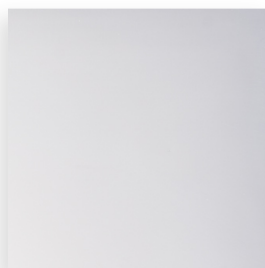
Sandblasted Chrome

Microbillé Chromé (T3)



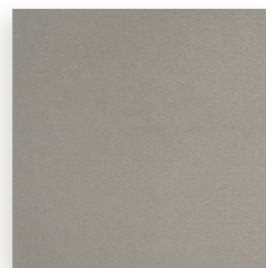
Brushed Chrome

Chromé Mat (T1)



Polished Chrome

Chromé Vif (T1)



Medium Pewter

Etain Moyen (T3)

GUNMETAL



Gray Gunmetal ●

Canon de Fusil Anthracite (T1)



Sanded Gunmetal

Canon de Fusil Sablé (T1)



Sandblasted Gunmetal

Microbillé Canon de Fusil Anthracite (T3)



Belgian Gunmetal

Canon de Fusil Belge (T3)



Dark Brushed Silver

Argent Patiné (T3)




Ebony

Ebène (T3)

METALLIC FINISHES

 Unlacquered

 Mechanism finish can be matched to plate finish

BRASS



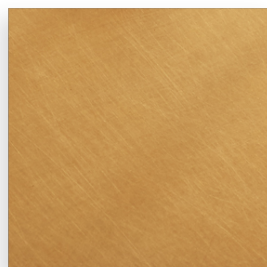
Polished Brass

Lacquered (T2) or
Unlacquered (T3).



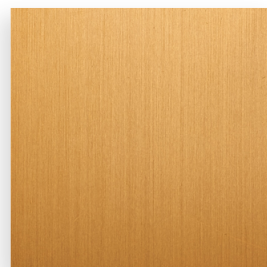
Satin Brass

Champagne (T2)



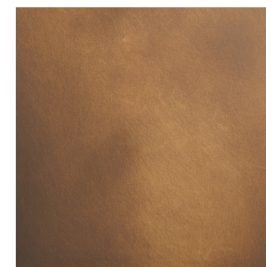
Burnished Brass

Unlacquered with Wax Varnish
(T3)



Golden Brushed Brass

Doré Patiné (T2)



Antique Brass NA

Unlacquered with Wax
Varnish (T3)

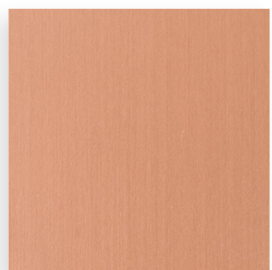


Aged Brass

Laiton Vieilli Ciré
Unlacquered with Wax
Varnish (T3)

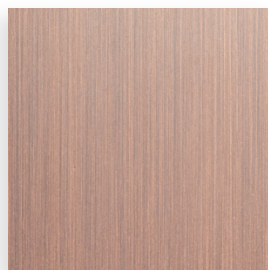


COPPER



Satin Copper 2

Cuivre Satiné (T3)



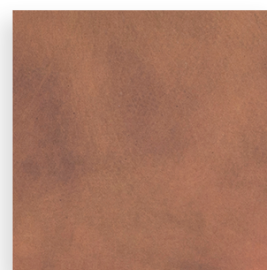
Dark Brushed Copper

Cuivre Patiné (T3)



Aged Burnished Copper

Cuivre Vieilli Bouchonné (T3)



Antique Copper

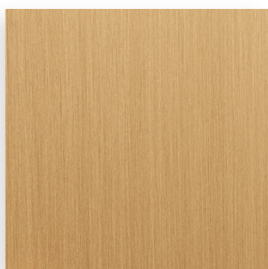
Cuivre Antique (T3)

BRONZE



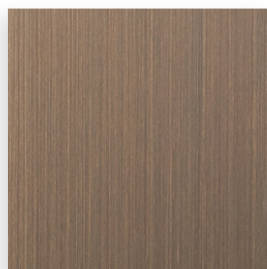
Light Bronze

Bronze Médaille Clair (T2)



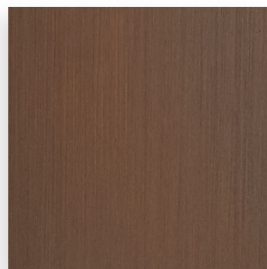
Light Bronze Matte

Bronze Médaille Clair Vernis Mat
(T2)



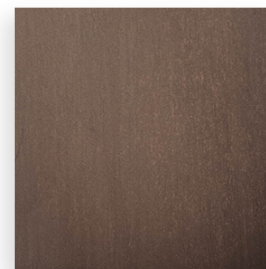
Medium Bronze

Bronze Médaille Allemand
(T2)



Dark Bronze

Bronze Médaille Foncé
(T2)



Dark Polished Bronze

Bronze Médaille Foncé
Barège Brillant (T3)





CONTACT

info@meljac-na.com

323-421-7426

meljac-na.com